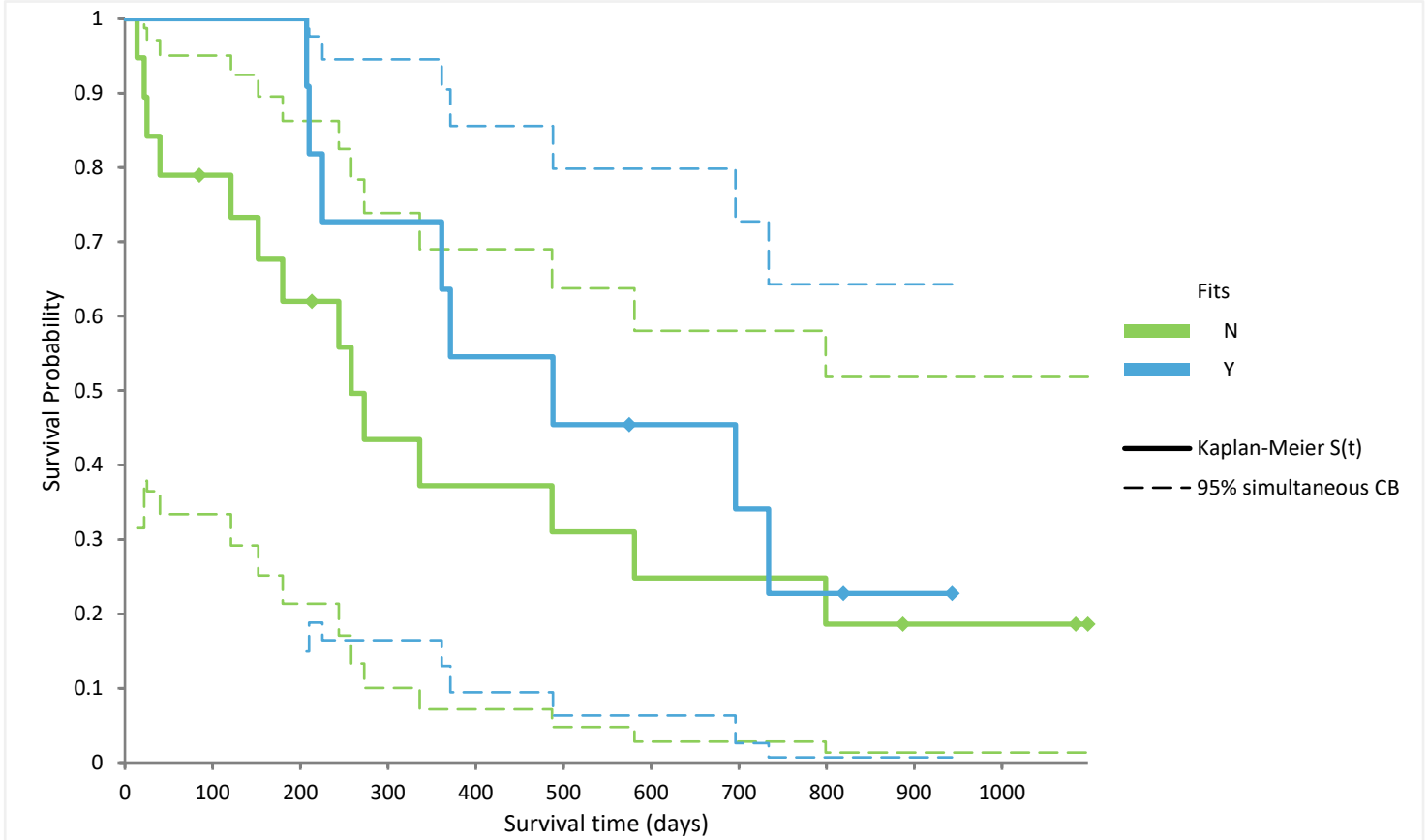


Survival time 30 patients with brain cancer

Filter: No filter

Last updated 22 June 2022 at 16:41 by Analyse-it Software, Ltd.

Kaplan-Meier Survival Function



Fits	N	Event occurred	Censored (A)	% Censored
N	19	14	5	26.3%
Y	11	8	3	27.3%

Fits	Mean [0, 1000]	95% CI	SE
N	401.7	235.8 to 567.5	84.61
Y	559.0	379.9 to 738.1	91.38

Fits	Median	95% CI	75% surviving	25% surviving
N	258.0	121.0 to 581.0	121.0	581.0
Y	488.0	210.0 to -	225.0	734.0

Log-rank test

X ² statistic	0.88
DF	1
p-value	0.3472 ¹

H0: $S(t)_1 = S(t)_2 = S(t)...$

The survival function of the populations are all equal.

H1: $S(t)_i \neq S(t)_j$ for at least one i, j

The survival function of the populations are not all equal.

¹ Do not reject the null hypothesis at the 5% significance level.