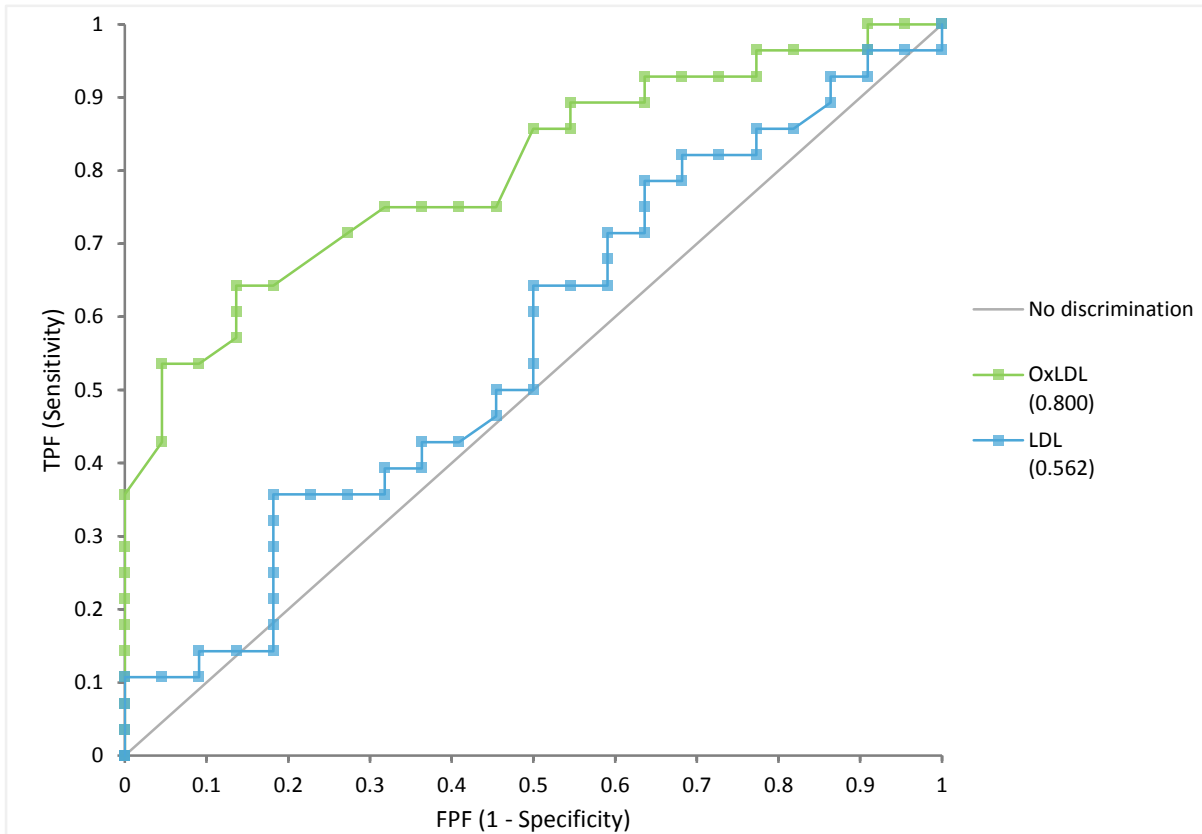


ROC Curve



	1	0	Total
Diagnosis	28	22	50

	AUC	95% CI	SE	Z statistic	p-value
OxLDL	0.800	0.678 to 0.921	0.0620	4.83	<0.0001 <sup>1</sup>
LDL	0.562	0.398 to 0.725	0.0836	0.74	0.4604 <sup>2</sup>

H0:  $\theta = 0.5$

The area under the curve is equal to 0.5.

H1:  $\theta \neq 0.5$

The area under the curve is not equal to 0.5.

<sup>1</sup> Reject the null hypothesis in favour of the alternative hypothesis at the 5% significance level.

<sup>2</sup> Do not reject the null hypothesis at the 5% significance level.

Comparison

Contrast	Difference	95% CI	SE	Z	p-value
OxLDL - LDL	0.238	0.083 to 0.393	0.0790	3.01	0.0026 <sup>1</sup>

H0:  $\theta_i - \theta_j = 0$

The difference between the area under the curves is equal to 0.

H1:  $\theta_i - \theta_j \neq 0$

The difference between the area under the curves is not equal to 0.

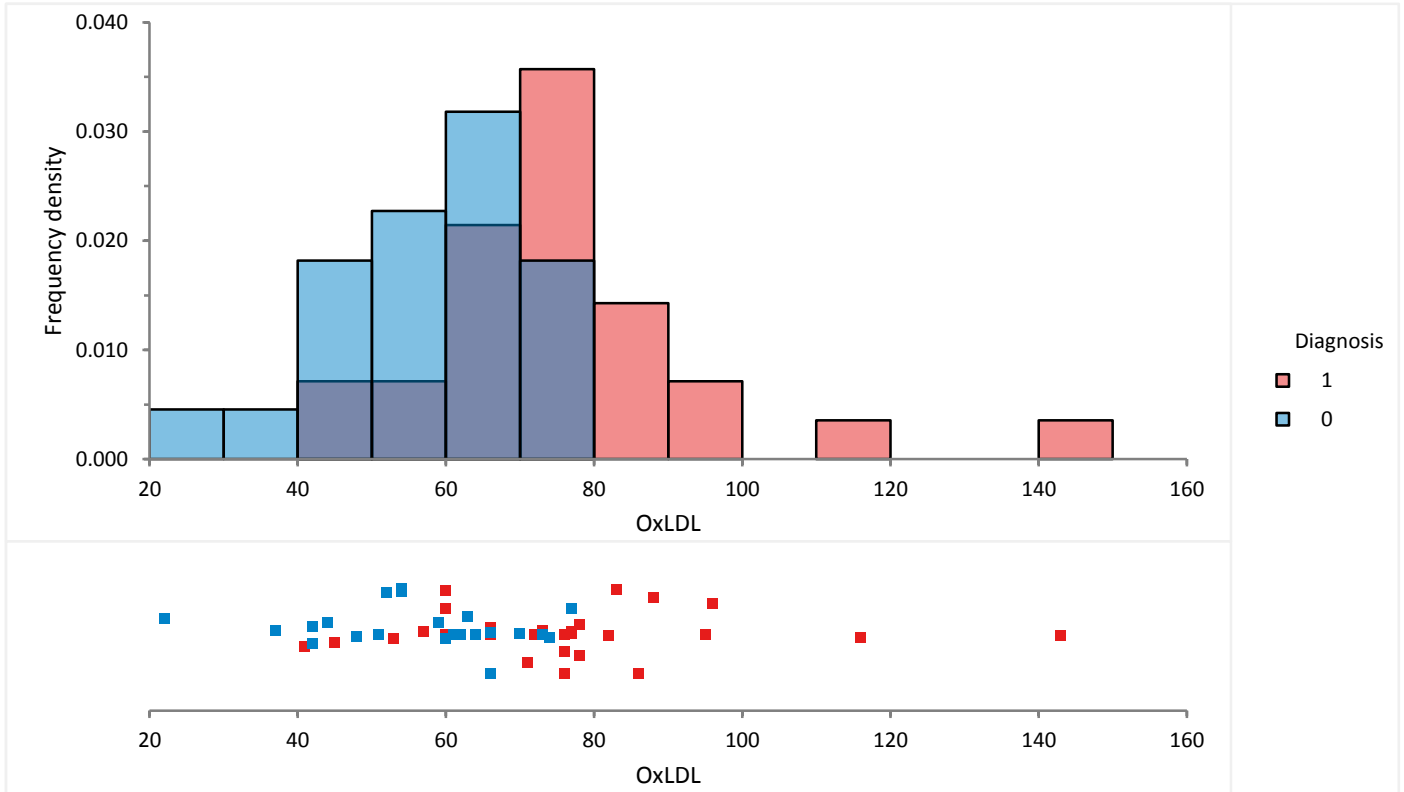
<sup>1</sup> Reject the null hypothesis in favour of the alternative hypothesis at the 5% significance level.

# Diagnostic performance: OxLDL

CLSI EP24-A2 - Appendix D

Last updated 30 June 2015 at 10:03 by Simon Huntington

## Descriptives



## Decision Threshold

